

Highly affordable,
entry-level managed
10/100 connectivity
for medium-sized
businesses and branch
office networks

OVERVIEW

The 3Com® Switch 4200 family provides wirespeed 10/100 stackable switching with easy-to-use features perfect for cost-conscious medium-sized businesses needing basic access and distribution.

These fixed-configuration switches support enterprise-class QoS, security and stackable scalability with single IP address management. All models come with two copper 10/100/1000 ports for built-in stacking or down-link ports; one model also has two additional SFP mini-GBIC slots for added copper or fiber connection flexibility.

KEY BENEFITS

DELIVERS AFFORDABLE ENTERPRISE-CLASS FEATURES

3Com delivers superior business value by offering enterprise-class solutions without the complexity. These stackable switches provide wirespeed performance, QoS, VLANs, security and resiliency features.

EASY SETUP MINIMIZES INSTALLATION EXPENSE

With a fixed configuration format, the Switch 4200 is fully plug-and-play—designed to operate out-of-the-box with the minimum amount of user configuration. Auto-negotiation and auto-MDIX detection make it simple to install while automatic IP allows the switch to configure its own IP settings by negotiating with industry-standard DHCP or BOOTP servers.

PROVIDES SECURITY AND RESILIENCY

The Switch 4200 provides IEEE 802.1X Network Login and RADIUS Authenticated Device Access (RADA) security, and resiliency features such as Rapid Spanning Tree Protocol and IEEE 802.3ad Link Aggregation (LACP) for Gigabit ports.

ENHANCES MANAGEMENT AND CONTROL

The Switch 4200 family is easy to use and manage, designed to increase business productivity by reliably supporting business applications. Stack together up to four devices for easy administration, with single IP management. 3Com network management software offers comprehensive support, including 3Com Network Director for an enterprise standalone solution or 3Com Network Supervisor for smaller networks.

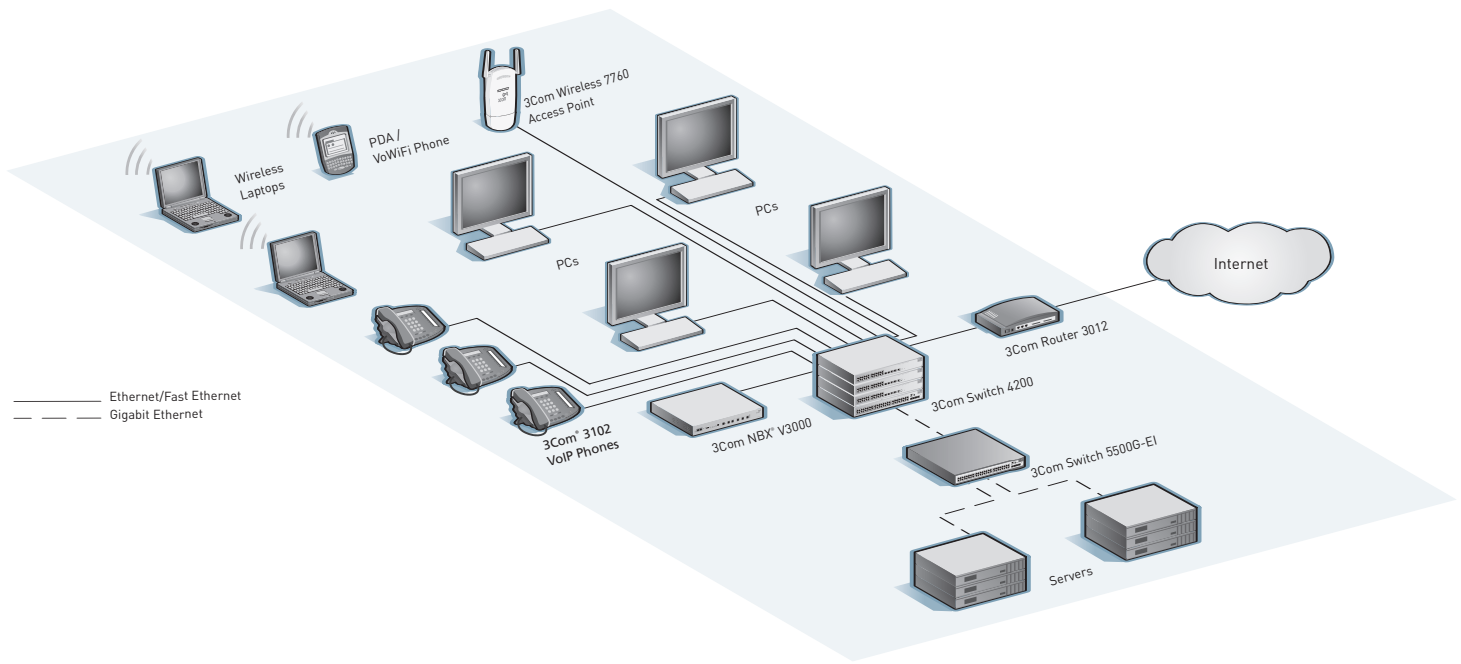
SUPPORTED BY LIMITED LIFETIME HARDWARE WARRANTY

3Com gives a Limited Lifetime Hardware Warranty on the Switch 4200 Family. Advance Hardware Replacement, with Next Business Day shipment is available in most regions.



from top: 3Com Switch 4200 28-Port, Switch 4200 26-Port, Switch 4200 50-Port

SMALL-TO-MEDIUM LAN CONFIGURATION SUPPORTED BY THE SWITCH 4200



PRODUCT WARRANTY AND OTHER SERVICES

Warranty	3Com Limited Lifetime Warranty. For as long as the original end user owns the product, or for five years after 3Com discontinues sale of the product, whichever occurs first.
Hardware coverage	Covers the complete unit including power supply.
In-warranty hardware replacement*	Advanced Hardware Replacement of hardware for the duration of the warranty. In the US 48 contiguous states this is same-day ship with next business day delivery when call received before noon Pacific time. For Canada, Alaska and Hawaii, this is same-day ship when call received before noon Pacific time. In Western Europe, this is same-day ship when call received before noon Greenwich time. For the rest of the world, it is next-business-day ship. Actual delivery times may vary depending on customer location. Reasonable commercial efforts apply.
Software coverage	90 days for media replacement.
Software updates*	Access to maintenance and bug fix releases for the software version purchased for the duration of the warranty.
Online Knowledgebase support*	Access to online troubleshooting tool for the duration of the warranty.

* These services are not included as part of the Warranty and 3Com reserves the right to modify or cancel this offering at any time, without advance notice. This offering is not available where prohibited by law. Services are effective at warranty start date, and are enabled with product registration. Customers receive a user ID with eSupport registration.

SERVICE AND SUPPORT

3Com Global Services offers the resources and talents of a major corporation plus more than two decades of experience in resolving network challenges and delivering business benefits to enterprises around the world.

Global support with a personalized focus in the local language helps drive productivity and minimize expenses. Because 3Com understands both the technology and the business, we're the partner you need to maintain your competitive edge and remain strong.

Suggested Service, Support and Training Offerings

Network Health Check	An activity-auditing service focused on improving network performance and productivity Includes traffic monitoring, utilization analysis, problem identification, and asset deployment recommendations Extensive report provides blueprint for action
Network Installation and Implementation Services	Experts set-up and configure equipment and integrate technologies to maximize functionality and minimize business disruption For large and complex sites, implementation services include personalized configuration, project management, extended testing and coaching on network administration
Project Management	Provides extra focus and resources that special projects demand 3Com engineers manage entire process from initial specifications to post-project review Using structured methodology, requirements are identified, projects planned and progress of implementation activities tracked
3Com Guardian SM Maintenance Service	This service provides comprehensive on-site support and includes advance hardware replacement, telephone technical support and software upgrades
3Com Express SM Maintenance Service	This service provides speedy access to 3Com shipment of advance hardware replacements, software upgrades and telephone support
3Com University	Self-paced and instructor-led technology and product courses, plus certification programs

SPECIFICATIONS

All information in this section is relevant to all members of the 3Com Switch 4200 family, unless otherwise stated.

CONNECTORS

26-port

24 auto-negotiating 10BASE-T/100BASE-TX ports configured as auto-MDI/MDIX

2 auto-negotiating 10BASE-T/100BASE-TX/1000BASE-T ports configured as auto MDI/MDIX

28-port

24 auto-negotiating 10BASE-T/100BASE-TX ports configured as auto-MDI/MDIX

2 auto-negotiating 10BASE-T/100BASE-TX/1000BASE-T ports configured as auto MDI/MDIX

2 Gigabit SFP ports

50-port

48 auto-negotiating 10BASE-T/100BASE-TX ports configured as auto-MDI/MDIX

2 auto-negotiating 10BASE-T/100BASE-TX/1000BASE-T ports configured as auto MDI/MDIX

PERFORMANCE

26-port

8.8 Gbps switching capacity (maximum), 6.6 Mpps forwarding rate (maximum)

28-port

12.8 Gbps switching capacity (maximum), 9.5 Mpps forwarding rate (maximum)

50-port

13.6 Gbps switching capacity, (maximum), 10.1 Mpps forwarding rate (maximum)

All models

Wirespeed performance across ports in full mesh configuration
Store-and-forward switching;
latency <10 µs

LAYER 2 SWITCHING

8,000 MAC addresses in address table

128 static MAC addresses (in addition to default address)

60 Port-based VLANs (IEEE 802.1Q)

IEEE 802.3ad Link Aggregation Control Protocol (LACP) for Gigabit ports only; automated and manual aggregation

Per-switch trunk groups:

- 26-port: 1 group with 2 ports
- 28-port: 2 groups with 2 ports each
- 50-port: 1 group with 2 ports

Auto-negotiation of port speed and duplex

IEEE 802.3x full-duplex flow control

Back pressure flow control for half duplex

Broadcast storm suppression

IEEE 802.1D Spanning Tree Protocol (STP)

IEEE 802.1w Rapid Spanning Tree Protocol (RSTP)

Bridge Protocol Data Unit (BPDU) protection

Internet Group Management Protocol (IGMP) snooping on Layer 2 interfaces

Filtering for 128 multicast groups

CONVERGENCE

2 hardware queues per port

Strict priority queuing

IEEE 802.1p Class of Service/Quality of Service (CoS/QoS) on egress

SECURITY

IEEE 802.1X Network login user authentication:

- EAP over LAN (EAPoL) transport with EAP-MD5, PAP, CHAP, PEAP and EAP-TLS authentication
- Multiple users per port

RADIUS network server authentication

Automatic VLAN assignment via RADIUS server

Wirespeed packet filtering in hardware

RADIUS Authenticated Device Access (RADA): authenticate devices based on MAC address against RADIUS server and assign VLAN ID

Port-based MAC address Disconnect Unknown Device (DUD)

STACKING

Single IP address and management interfaces for centralized control

Up to 4 devices per stack, or 192

10/100 front panel ports

SPECIFICATIONS, CONTINUED

MANAGEMENT

CLI via console or Telnet
 Embedded web management interface
 System configuration with SNMP v1 and 2c
 Remote Monitoring (RMON) groups statistics, history, alarm and events
 Configuration file for backup and restore
 System file transfer mechanisms: FTP, Trivial FTP (TFTP)
 3Com management applications:

- 3Com Network Supervisor for basic, turn-key network management for mid-market businesses
- 3Com Network Director for comprehensive, turn-key network management for the enterprise
- 3Com Enterprise Management Suite for flexible, extensible management in advanced enterprise IT environments

DIMENSIONS

Height: 43.6 mm (1.7 in or 1 RU)
 Width: 440.0 mm (17.3 in)
 Depth: 274.0 mm (10.8 in)
 Weight:

- 24-port— 2.3 kg (5.0 lb)
- 26-port— 2.4 kg (5.2 lb)
- 50-port— 2.3 kg (5.0 lb)

POWER SUPPLY

Input voltage: 100-240 VAC, 50/60 Hz
 Current rating: 1.0A maximum

ENVIRONMENTAL REQUIREMENTS

Operating temperature: 0° to 40°C (32° to 104°F)
 Storage temperature: -40° to 70°C (-40° to 158°F)
 Humidity (operating and storage): 10% to 90% non-condensing
 Standard: EN 60068 (IEC 68)

RELIABILITY

(MTBF @ 25°C)
 26-port: 63 years (559,000 hours)
 28-port: 51 years (451,000 hours)
 50-port: 55 years (448,000 hours)

OPERATIONAL NOISE

Quiet operation; fan-less design

IEEE STANDARDS SUPPORTED

IEEE 802.1D Spanning Tree Protocol
 IEEE 802.1p QoS
 IEEE 802.1Q VLANs / VLAN tagging
 IEEE 802.1w Rapid Spanning Tree
 IEEE 802.1X Network Login Security
 IEEE 802.3 Ethernet
 IEEE 802.3ab (1000BASE-T)
 IEEE 802.3ad Link Aggregation (unit wide)
 IEEE 802.3i 10BASE-T
 IEEE 802.3u Fast Ethernet
 IEEE 802.3x Flow control
 IEEE 802.3z Gigabit Ethernet
 1000BASE-X

IETF STANDARDS

RFC 768 UDP Helper / Relay
 RFC 791 IP
 RFC 792 ICMP Query, support as defined in RFC 1812
 RFC 793 TCP
 RFC 826 Address Resolution Protocol (ARP)
 RFC 854 Telnet
 RFC 1350 Remote software upgrade TFTP
 RFC 1542 BootP, DHCP
 RFC 2616 HTTP compatibility

Management, including MIBs Supported

RFC 1157 SNMP v1
 RFC 1213 MIB II
 RFC 1215 MIB Monitoring Trap Registration
 RFC 1493 Bridge MIB
 RFC 1659 RS232 MIB
 RFC 1757 RMON I
 RFC 2021 RMON II Probe Config
 RFC 2233 Interfaces MIB
 RFC 2618 MIB BulkConf-RADIUS Servers, BulkConf-Port Security
 RFC 2620 (RADIUS Accounting Client MIB)
 RFC 2665 EtherLike MIB
 RFC 2668 MAU MIB
 RFC 2674 Bridge MIB Extensions

EMISSIONS / AGENCY APPROVALS

EN 55022 Class A
 FCC Part 15 Subpart B Class A
 ICES-003 Class A
 VCCI Class A

IMMUNITY

EN 55024

SAFETY AGENCY CERTIFICATIONS

UL 60950-1
 EN 60950-1
 CSA 2.22 # 60950
 IEC 60950-1
 EU RoHS Compliant

WARRANTY AND OTHER SERVICES

Limited Lifetime Hardware Warranty, including power supply
 Limited Software Warranty for 90 days
 Advance Hardware Replacement with Next Business Day shipment in most regions
 90 days of telephone technical support
 Refer to www.3com.com/warranty for details.

ORDERING INFORMATION

PRODUCT DESCRIPTION

PRODUCT DESCRIPTION	3COM SKU
3Com Switch 4200 26-Port	3C17300A
3Com Switch 4200 28-Port	3C17304A
3Com Switch 4200 50-Port	3C17302A

Gigabit SFP Transceivers

3Com 1000BASE-SX SFP	3CSFP91
3Com 1000BASE-LX SFP	3CSFP92
3Com 1000BASE-T SFP	3CSFP93
3Com 1000BASE-LH SFP	3CSFP97

3Com Global Services

3Com Network Health Check, Installation Services,
 and Express Maintenance www.3com.com/services_quote
 3Com University Courses www.3com.com/3comu

Visit www.3com.com for more information about 3Com secure converged network solutions.

3Com Corporation, Corporate Headquarters, 350 Campus Drive, Marlborough, MA 01752-3064
 3Com is publicly traded on NASDAQ under the symbol COMS.

Copyright © 2006 3Com Corporation. All rights reserved. 3Com, the 3Com logo and NBX are registered trademarks, and Guardian and Express are service marks, of 3Com Corporation. All other company and product names may be trademarks of their respective companies. While every effort is made to ensure the information given is accurate, 3Com does not accept liability for any errors or mistakes which may arise. All specifications are subject to change without notice. 400770-012 10/06



**Highly affordable,
entry-level managed
Gigabit connectivity
for medium-sized
businesses and branch
office networks**

OVERVIEW

The 3Com® Switch 4200G family delivers quad-speed performance—10/100/1000 and 10-Gigabit—with plug-and-play "Gigabit-to-the-Desktop" switching and rich, easy-to-use features perfect for cost-conscious medium-sized businesses wanting a fast, efficient network upgrade.

Layer 2 switching along with Layer 3 static routes make these ideal for wiring closet, workgroup connectivity. For great flexibility, four of the ports are dual-personality, operating either as 10/100/1000 or SFP-based fiber. These switches accommodate one or two extra optional 10-Gigabit high-speed links, enabling connectivity to a core network or to high-performance servers. Enterprise-class security features include IEEE 802.1X network login, SSL encrypted device log-in and Access Control Lists. These switches come with a lifetime warranty and with next business day, advanced hardware replacement in most regions.

Family switch models—clusterable in any combination up to sixteen units—are:

- > 3Com Switch 4200G 12-Port:
12 auto-negotiating 10BASE-T/100BASE-TX/1000BASE-T ports,
4 of which are dual-personality 10/100/1000 or SFP Gigabit;
1 10-Gigabit slot
- > 3Com Switch 4200G 24-Port:
24 auto-negotiating 10BASE-T/100BASE-TX/1000BASE-T ports,
4 of which are dual-personality 10/100/1000 or SFP Gigabit;
2 10-Gigabit slots
- > 3Com Switch 4200G 48-Port:
48 auto-negotiating 10BASE-T/100BASE-TX/1000BASE-T ports,
4 of which are dual-personality 10/100/1000 or SFP Gigabit;
2 10-Gigabit slots

KEY BENEFITS

AFFORDABLE MANAGED GIGABIT CONNECTIVITY

The Switch 4200G family is 3Com's most economical Gigabit managed stackable switch line. Achieve up to a 10-times performance improvement with Gigabit, at prices many still associate with 10/100 switches.



from top: 3Com Switch 4200G 12-Port, Switch 4200G 24-Port, Switch 4200G 48-Port

KEY BENEFITS (CONTINUED)

FUTURE PROOF NETWORKING

3Com Switch 4200G switches provide outstanding investment protection by providing quad-speed 10/100/1000 Mbps and 10-Gigabit switching. Gradually move users to Gigabit speeds, with full backward compatibility with slower 100 Mbps and 10 Mbps networking.

Switch 4200G models support 10-Gigabit uplinks to tie into an evolving core network infrastructure. They are XENPAK transceiver ready, requiring no additional module for 10-Gigabit XENPAK support. A module for 10-Gigabit XFP support is also available.

EMPOWERS APPLICATION CONVERGENCE

The Switch 4200G family combines high performance Gigabit switching, QoS and traffic management features to help ensure essential applications get the appropriate priority for efficient utilization of network resources.

ENHANCES MANAGEMENT AND CONTROL

The Switch 4200G family is easy to use and manage, designed to increase business productivity by reliably supporting business applications. Cluster together up to 16 devices for easy administration, with single IP management across 3Com switching lines—with mixed clusters of Switch 4200G and Switch 5500 switches.

DELIVERS HIGH PERFORMANCE

No need to buy new switches when additional network performance is needed, as the Switch 4200G family features 12-, 24- and 48-port models, providing aggregate switching capacity up to 136 Gbps and 101.2 Mpps performance on the 48-port model.

GIVES FLEXIBLE, BASIC LAYER 3 ROUTING

Layer 3 static routing, with 32 definable static routes, gives this switch added flexibility to handle more complex networking needs.

SUPPORTED BY LIMITED LIFETIME HARDWARE WARRANTY

3Com gives a Limited Lifetime Hardware Warranty on the Switch 4200G 10/100/1000 Family. Advance Hardware Replacement, with Next Business Day shipment in most regions, is provided upon product registration. See www.3com.com/warranty for details.

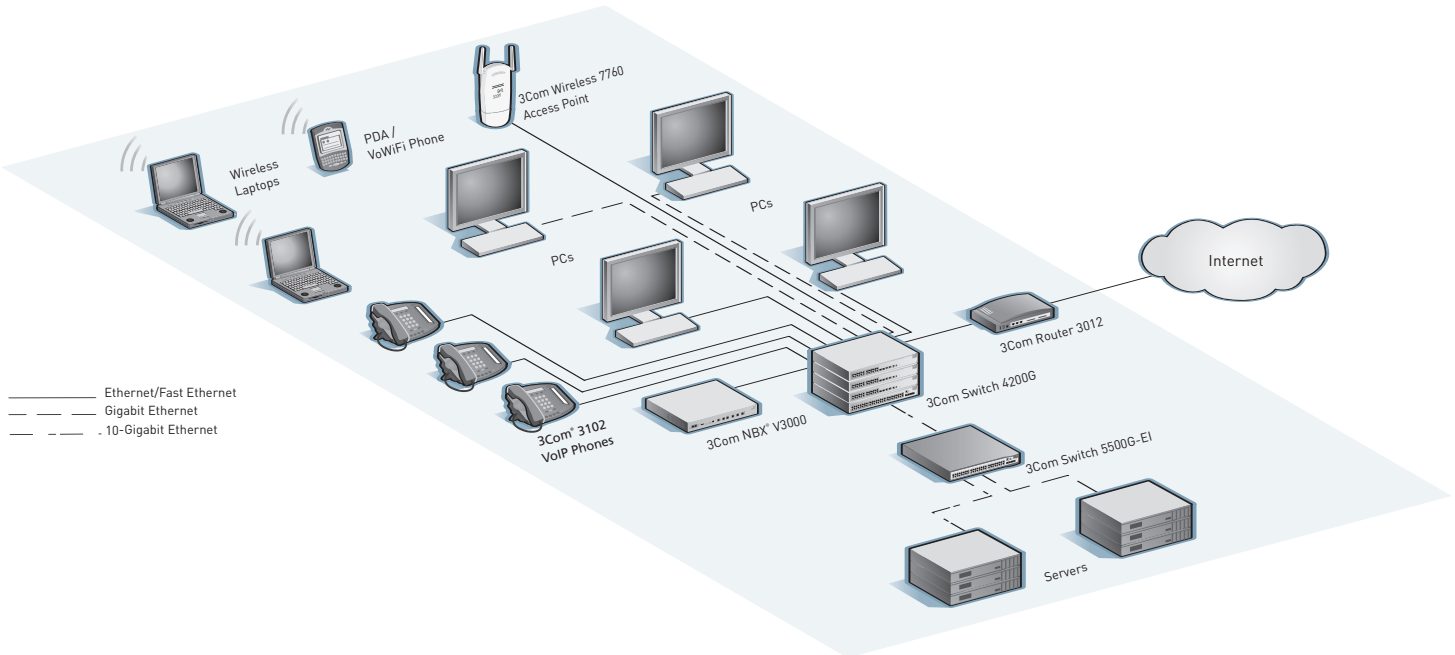
FEATURE HIGHLIGHTS

Feature	Description
IEEE 802.1X network access control	Standards-based security combined with RADIUS authentication
RADIUS Authenticated Device Access (RADA)	Authentication of attached devices via MAC address for an additional level of endpoint security
Access Control Lists (ACLs)	Enable usage policies at each point of access to the network via the switch
Bandwidth rate limiting and protocol filtering	Enforce controls on each port for efficient use of network resources and prioritization of delay-sensitive VoIP traffic
“Dual-personality” Gigabit Ethernet interfaces	Choice of copper or fiber media for flexible uplinks
Multicast filtering and Rapid Spanning Tree protocol support	Improve QoS, scalability and network availability
Layer 3 static routing	Gives additional flexibility in deployment to boost network performance
Jumbo Frames support	Able to pass larger-than-standard Ethernet frames to boost network performance and efficiency
Secure management	Authentication and encryption of management traffic via Secure Shell (SSH v2) and SNMP v3
3Com Operating System	Proven software featured in 3Com premium enterprise switches such as the Switch 5500, 7700 and 8800 families and enterprise routers like the Router 6000, 5000 and 3000 families
Service and Support	Backed by 3Com Global Services and authorized partners with demonstrated expertise in network assessment, implementation and maintenance



The 3Com Switch 4200G 1-Port 10-Gigabit Module (XFP) 3C17666 shown above adds one XFP-based 10-Gigabit port to the rear of a Switch 4200G system as a high-bandwidth link for connections to high speed network backbones or other peer switches or servers. An XFP transceiver, sold separately, is required to support the desired connection's fiber media.

SMALL-TO-MEDIUM LAN CONFIGURATION SUPPORTED BY THE SWITCH 4200G



In the above network, 3Com Switch 4200G and Switch 5500G-EI units are managed as a single cluster.

PRODUCT WARRANTY AND OTHER SERVICES

Warranty	3Com Limited Lifetime Warranty. For as long as the original end user owns the product, or for five years after 3Com discontinues sale of the product, whichever occurs first.
Hardware coverage	Covers the complete unit including power supply and fan.
In-warranty hardware replacement*	Advanced Hardware Replacement of hardware for the duration of the warranty. In the US 48 contiguous states this is same-day ship with next business day delivery when call received before noon Pacific time. For Canada, Alaska and Hawaii, this is same-day ship when call received before noon Pacific time. For the rest of the world, it is next-business-day ship. Actual delivery times may vary depending on customer location. Reasonable commercial efforts apply.
Software coverage	90 days for media replacement.
Software updates*	Access to maintenance and bug fix releases for the software version purchased for the duration of the warranty.
Online Knowledgebase support*	Access to online troubleshooting tool for the duration of the warranty.

* These services are not included as part of the Warranty and 3Com reserves the right to modify or cancel this offering at any time, without advance notice. This offering is not available where prohibited by law. Services are effective at warranty start date, and are enabled with product registration. Customers receive a user ID with eSupport registration.

SERVICE AND SUPPORT

3Com Global Services offers the resources and talents of a major corporation plus more than two decades of experience in resolving network challenges and delivering business benefits to enterprises around the world.

Global support with a personalized focus in the local language helps drive productivity and minimize expenses. Because 3Com understands both the technology and the business, we're the partner you need to maintain your competitive edge and remain strong.

Suggested Service, Support and Training Offerings

Network Health Check	<p>An activity-auditing service focused on improving network performance and productivity</p> <p>Includes traffic monitoring, utilization analysis, problem identification, and asset deployment recommendations</p> <p>Extensive report provides blueprint for action</p>
Network Installation and Implementation Services	<p>Experts set-up and configure equipment and integrate technologies to maximize functionality and minimize business disruption</p> <p>For large and complex sites, implementation services include personalized configuration, project management, extended testing and coaching on network administration</p>
Project Management	<p>Provides extra focus and resources that special projects demand</p> <p>3Com engineers manage entire process from initial specifications to post-project review</p> <p>Using structured methodology, requirements are identified, projects planned and progress of implementation activities tracked</p>
3Com Guardian SM Maintenance Service	<p>This service provides comprehensive on-site support and includes advance hardware replacement, telephone technical support and software upgrades</p>
3Com Express SM Maintenance Service	<p>This service provides speedy access to 3Com shipment of advance hardware replacements, software upgrades and telephone support</p>
3Com University	<p>Self-paced and instructor-led technology and product courses, plus certification programs</p>

SPECIFICATIONS

All information in this section is relevant to all members of the 3Com Switch 4200G 10/100/1000 family, unless otherwise stated.

CONNECTORS

12-port

12 auto-negotiating 10BASE-T/100BASE-TX/1000BASE-T ports, 4 of which are dual-personality 10/100/1000 or SFP Gigabit ports
1 rear slot for direct 10-Gigabit XENPAK transceiver or for 10-Gigabit module (XFP)

24-port

24 auto-negotiating 10BASE-T/100BASE-TX/1000BASE-T ports, 4 of which are dual-personality 10/100/1000 or SFP Gigabit ports
2 rear slots for direct 10-Gigabit XENPAK transceiver or for 10-Gigabit module (XFP)

48-port

48 auto-negotiating 10BASE-T/100BASE-TX/1000BASE-T ports, 4 of which are dual-personality 10/100/1000 or SFP Gigabit ports
2 rear slots for direct 10-Gigabit XENPAK transceiver or for 10-Gigabit module (XFP)

PERFORMANCE

12-port

44 Gbps switching capacity (maximum), 32.7 Mpps forwarding rate (maximum)

24-port

88 Gbps switching capacity (maximum), 65.5 Mpps forwarding rate (maximum)

48-port

136 Gbps switching capacity, (maximum), 101.2 Mpps forwarding rate (maximum)

All models

Wirespeed performance across ports in full mesh configuration
Store-and-forward switching; latency <10 µs

LAYER 2 SWITCHING

8,196 MAC addresses in address table
1,024 static MAC addresses (in addition to default address)

Jumbo Frame support

256 Port-based VLANs (IEEE 802.1Q)

IEEE 802.3ad Link Aggregation

Control Protocol (LACP); automated and manual aggregation

Per-switch trunk groups:

- 6 groups (12-port)
- 13 groups (24-port)
- 25 groups (50-port)

Auto-negotiation of port speed and duplex IEEE 802.3x full-duplex flow control

Back pressure flow control for half duplex

IEEE 802.1D Spanning Tree Protocol (STP)

IEEE 802.1w Rapid Spanning Tree Protocol (RSTP)

Bridge Protocol Data Unit (BPDU) protection

Internet Group Management Protocol (IGMP) snooping on Layer 2 interfaces
Filtering for 128 multicast groups

LAYER 3 SWITCHING

Hardware based routing

32 static routes

8 IP interfaces

CONVERGENCE

Eight hardware queues per port

Weighted Round Robin queuing

Strict Priority queuing

IEEE 802.1p Class of Service/Quality of Service (CoS/QoS) on egress

Traffic shaping with port-based egress rate limiting

Application and protocol blocking

Auto VLAN assignment for voice traffic determined by vendor OUI

SECURITY

IEEE 802.1X Network login user authentication:

- EAP over LAN (EAPoL) transport with EAP-MD5, PAP, CHAP, PEAP and EAP-TLS authentication
- Multiple users per port
- 1024 max online users

Local and RADIUS server authentication

RADIUS session accounting

Automatic VLAN assignment via RADIUS server

Wirespeed packet filtering in hardware

ACLs filter at Layers 2, 3 and 4:

- Source/destination MAC address
- Ethernet type
- Source/destination IP address
- Source/destination TCP port
- Source/destination UDP port

RADIUS Authenticated Device

Access (RADA): authenticate devices

based on MAC address against

RADIUS server and assign VLAN

ID and ACL

Port-based MAC address Disconnect

Unknown Device (DUD)

IEEE 802.1X user authentication of switch management on switch Telnet and console sessions; four access privilege levels

Hierarchical management and password protection for management

interface

SNMP v3 encryption

SSH v2

Denial of Service protection

CLUSTERED STACKING

Single IP address and management interfaces for centralized control
Compatibility with 5500 and 5500G clustering

Up to 16 devices per cluster, or 768 Gigabit front panel ports

MANAGEMENT

CLI via console or Telnet

Embedded web management interface
System configuration with SNMP v1, 2c and 3

Comprehensive statistics, including ACL/QoS and IP interface

Remote Monitoring (RMON) groups statistics, history, alarm and events

Many-to-1 port mirroring

Detailed alarm and debug information

Supports ping, remote ping and traceroute

Configuration file for backup and restore; multiple configuration files available

DHCP Relay and UDP Helper

System file transfer mechanisms: Xmodem, FTP, Trivial FTP (TFTP), Secure FTP (SFTP)

3Com management applications:

- 3Com Enterprise Management Suite for flexible, extensible management in advanced enterprise IT environments
- 3Com Network Director for comprehensive, turn-key network management for the enterprise
- 3Com Network Supervisor for basic, turn-key network management for mid-market businesses
- 3Com Network Access Manager for IEEE 802.1X and RADA integration with IAS/Active Directory
- 3Com Switch Manager for virtual clustering support across 3Com switch families

SPECIFICATIONS

(CONTINUED)

DIMENSIONS

Height: 4.4 cm (1.7 in or 1 RU)
 Width: 44.2 cm (17.4 in)
 Depth: 30.0 cm (11.8 in)
 Weight:
 12-port: 3.8 kg (8.4 lb)
 24-port: 4.1 kg (9.0 lb)
 48-port: 4.7 kg (10.4 lb)

POWER SUPPLY

AC Line Frequency: 50/60 Hz
 Input Voltage: 90-240 VAC
 Current Rating:
 12- and 24-port: 1.5A; 48-port: 2A

ENVIRONMENTAL REQUIREMENTS

Operating temperature: 0° to 40°C
 (32° to 104°F)
 Storage temperature: -10° to 70°C
 (14° to 158°F)
 Humidity (operating and storage):
 10% to 95% non-condensing
 Standard: EN 60068 (IEC 68)

RELIABILITY

(MTBF @ 25°C)
 12-port: 59 years (522,000 hours)
 24-port: 48 years (421,000 hours)
 48-port: 30 years (261,000 hours)
 10-Gigabit module: 75 years
 (662,000 hours)

IEEE STANDARDS SUPPORTED

IEEE 802.1D Spanning Tree Protocol (STP)
 IEEE 802.1p QoS
 IEEE 802.1Q VLANs / VLAN tagging
 IEEE 802.1s Multiple Spanning Tree
 IEEE 802.1w Rapid Spanning Tree
 IEEE 802.1X Network Login Security
 IEEE 802.3 Ethernet
 IEEE 802.3ad Link Aggregation (unit wide)
 IEEE 802.3ae 10-Gigabit Ethernet
 IEEE 802.3i 10BASE-T
 IEEE 802.3u Fast Ethernet
 IEEE 802.3x Flow control
 IEEE 802.3z Gigabit Ethernet
 1000BASE-X

IETF STANDARDS

RFC 768 UDP Helper / Relay
 RFC 783 Remote software upgrade TFTP
 RFC 791 IP
 RFC 792 ICMP Query, support as defined in RFC1812
 RFC 793 TCP
 RFC 826 Address Resolution Protocol (ARP)
 RFC 854 Telnet
 RFC 951 BootP Bootstrap Protocol
 RFC 1350 Remote software upgrade TFTP
 RFC 1519 Classless Inter-Domain Routing (CIDR)
 RFC 1812 Compliant "Requirements for IP Version 4 Routers"
 RFC 2131 DHCP client
 RFC 2236 Internet Group Management Protocol (IGMP) Snooping v2
 RFC 2616 HTTP compatibility
 RFC 2819 RMON 4 Groups - Stats, History, Alarm, Events (1,2,3,9)

Management, including MIBs Supported

RFC 1212 Concise MIB definitions
 RFC 1215 MIB Monitoring Trap Registration
 RFC 1213 MIB II
 RFC 1493 Bridge MIB
 RFC 2233 IF-MIB
 RFC 2233 Interfaces MIB
 RFC 2571 SNMP-Framework-MIB
 RFC 2572 SNMP-MPD-MIB
 RFC 2573 SNMP-Notification-MIB
 RFC 2573 SNMP-Target-MIB
 RFC 2574 SNMP v3 MIB
 RFC 2575 SNMP Access Control
 RFC 2618 MIB BulkConf-RADIUS Servers, BulkConf-Port Security
 RFC 2620 MIB
 RFC 2665 EtherLike MIB
 RFC 2674 Q-Bridge MIB
 RFC 2674 P-Bridge MIB
 RFC 2674 Bridge MIB Extensions
 RFC 2737 Entity-MIB
 RFC 2819 RMON I MIB
 RFC 2863 MIB Disc-Sizing
 RFC 2925 MIB Discovery, Topology
 RFC 3414 SNMP-User-based-SM-MIB
 RFC 3415 SNMP-View-based-ACM-MIB
 RFC 3418 SNMP v2
 IEEE 802.1X MIB
 IEEE 802.3ad MIB Disc-Sizing

EMISSIONS/AGENCY APPROVALS

EN 55022 :1998+A1:2000+A2:2003 Class A
 FCC Part 15 :2004 Class A
 ICES-003 :2004 Class A
 VCCI :2004 Class A
 CISPR 22 :2003 Class A
 IEC 61000-3-2:2001/EN 61000-3-2:2000
 IEC 61000-3-3:2002/EN 61000-3-3:1995+A1:2001
 Korean EMI Class A

IMMUNITY

EN 55024: 1998+A1:2001+A2:2003

SAFETY AGENCY CERTIFICATIONS

UL 60950-1:2003
 EN 60950-1:2001
 CSA 2.22 # 60950-1:2003
 IEC 60950-1:2001
 EU RoHS Compliant

WARRANTY AND OTHER SERVICES

Limited Lifetime Hardware Warranty, including fans and power supply
 Limited Software Warranty for 90 days
 Advance Hardware Replacement with Next Business Day shipment in most regions
 90 days of telephone technical support
 Refer to www.3com.com/warranty for details.

ORDERING INFORMATION

PRODUCT DESCRIPTION	3COM SKU
3Com Switch 4200G 12-Port	3CR17660-91
3Com Switch 4200G 24-Port	3CR17661-91
3Com Switch 4200G 48-Port	3CR17662-91
3Com Switch 4200G 1-Port 10-Gigabit Module (XFP)	3C17666
Gigabit SFP Transceivers	
3Com 1000BASE-SX SFP	3CSFP91
3Com 1000BASE-LX SFP	3CSFP92
3Com 1000BASE-LH SFP	3CSFP97
10-Gigabit XENPAK Transceivers	
10GBASE-LX4	3CXENPAK91
10GBASE-LR	3CXENPAK92
10GBASE-SR	3CXENPAK94
10GBASE-CX4	3CXENPAK95
10GBASE-ER	3CXENPAK96
10-Gigabit XFP Transceivers	
10GBASE-LR	3CXFP92
10GBASE-SR	3CXFP94
10GBASE-ER	3CXFP96
3Com Global Services	
3Com Network Health Check, Installation Services, and Express Maintenance	www.3com.com/services_quote
3Com University Courses	www.3com.com/3comu

Visit www.3com.com for more information about 3Com secure converged network solutions.

3Com Corporation, Corporate Headquarters, 350 Campus Drive, Marlborough, MA 01752-3064
3Com is publicly traded on NASDAQ under the symbol COMS.

Copyright © 2007 3Com Corporation. All rights reserved. 3Com, the 3Com logo and NBX are registered trademarks, and Guardian and Express are service marks, of 3Com Corporation. All other company and product names may be trademarks of their respective companies. While every effort is made to ensure the information given is accurate, 3Com does not accept liability for any errors or mistakes which may arise. All specifications are subject to change without notice. 400998-005 03/07

